

Kingprint

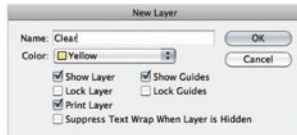
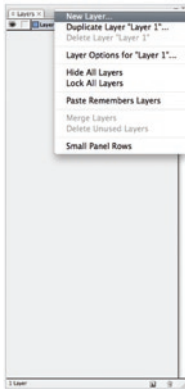
**CLEAR  
DRY INK**

file setup guide

# ***BASIC SETUP***

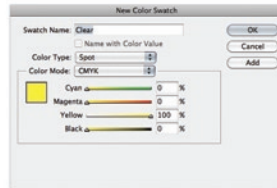
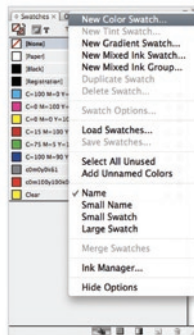
Files can be setup in Indesign or Illustrator. This basic setup applies to both programs:

- Add a new layer in the layers palette.  
Name the new layer: **Clear**  
The **Clear** layer should be the very first layer at the top
- Add a new color swatch in the swatches palette and name it: **Clear**  
Designate the color type as **Spot**  
Set the color mix to: C0 M0 Y100 K0



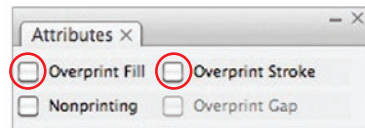
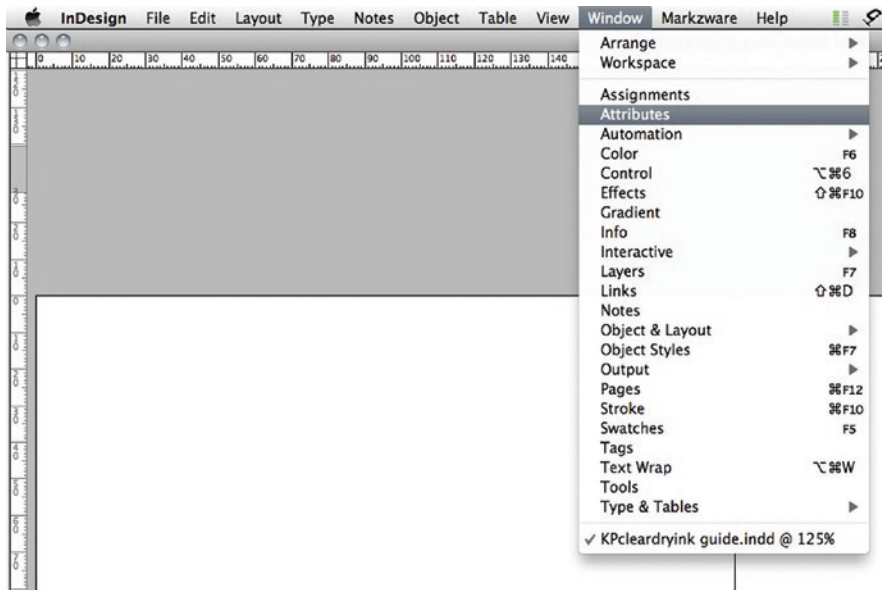
# layer setup

# swatch setup



# CREATING A SPOT OR FLOOD

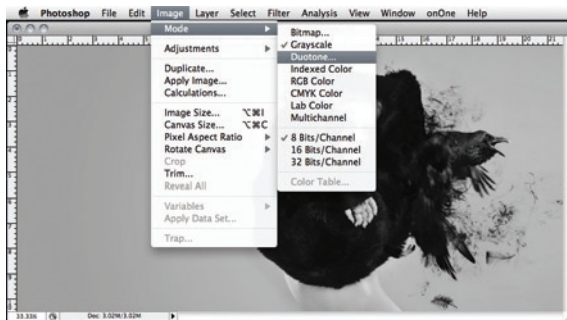
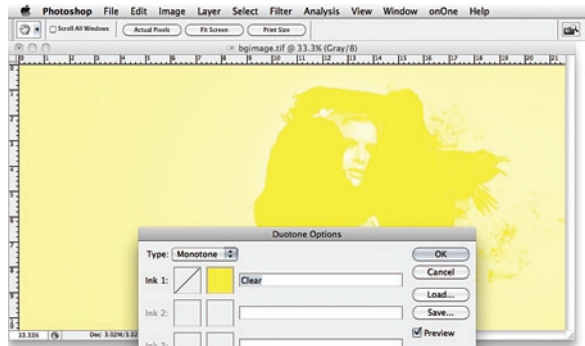
- Draw the shape or select text that will receive clear dry ink.  
Make sure all elements to print with clear are on the **Clear** layer
- Fill your shape with the new color swatch name **Clear**
- On the top toolbar: select **Window>Attributes>Overprint**  
Check the box **Overprint Fill and/or Overprint Stroke** (whichever applies to your artwork).  
This option **must be checked** for every individual element to print with **clear dry ink**.



# ***CLEAR DRY INK AND PHOTOSHOP***

## **Using an existing image to highlight detailed areas**

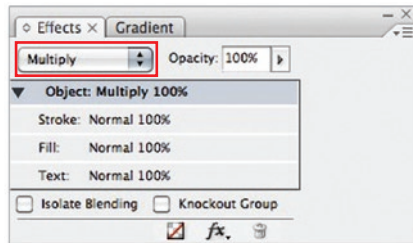
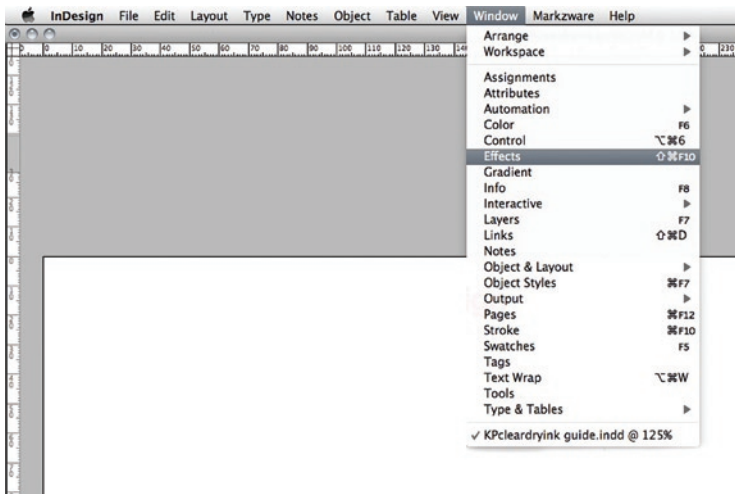
- Open the photo you would like to enhance with clear dry ink
- Convert the image to grayscale: Image>Mode>Grayscale and discard the color information
- Convert the image to duotone: Image>Mode>Duotone  
Select Monotone from the drop down  
Click on Ink1 and Set the color mix to: C0 M0 Y100 K0  
Name the ink as **Clear**
- Mask out any area you do not want to receive the clear dry ink
- Save the new file as a Layered PSD (for example: imageCLEAR.psd)



# BRINGING IT TOGETHER IN INDESIGN

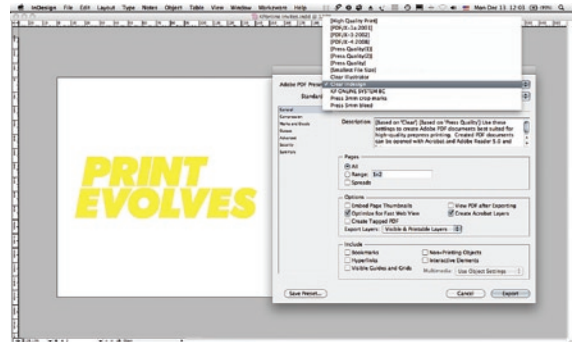
Once you have created your raster mask in Photoshop for clear dry ink, you now have to combine it in Indesign

- Place your color image on a layer, name the layer **Artwork**
- Create a new layer and name it **Clear**
- Copy your color image
- Select the **Clear** layer and use the “Paste in Place (Edit > Paste in Place)” command to copy the image onto the **Clear** layer
- Relink the file on the **Clear** layer to the PSD file (for example: imageCLEAR.psd) you created in Photoshop
- With your Clear Graphic still selected go to Window > Effects and set the Blending mode to Multiply
- Save your file
- Export to PDF using the Clear Dry Ink PDF preset (can be downloaded from our website: [www.kingprint.com.au/resources](http://www.kingprint.com.au/resources))



# EXPORTING TO PDF

- Download the Clear Ink PDF preset from our website [www.kingprint.com.au/resources](http://www.kingprint.com.au/resources)
- Save the preset file to the below locations depending on your operating system
  - Mac Users: (User home folder)/Library/Application Support/Adobe/Adobe PDF/Settings
  - Windows XP Users: Documents and Settings\[username]\Application Data\Adobe\Adobe PDF\Settings
- Export your file to PDF using the new preset
  - For Indesign use the File > Export option to create your PDF
  - For Illustrator use the File > Save As.. option to create your PDF



# ***IMPORTANT HINTS***

- Make sure your **Clear Layer** is the topmost layer and nothing sits above it
- Name your clear dry ink layer: **Clear**
- Name your clear dry ink swatch: **Clear** and make sure it is a **Spot Color**
- Place all objects that will receive clear dry ink on the **Clear Layer**
- Make sure all vector objects that have the color swatch **Clear** applied to them are set to overprint
- Make sure all raster objects that have the ink **Clear** applied to them are set to **Multiply**
- The total ink coverage **CMYK + Clear cannot exceed 260%**  
So the impact and visibility of the Clear Dry Ink is between 20% and 100% depending on the ink coverage of your CMYK object.  
Simply put, the less ink coverage you have the greater the visibility of the Clear Dry Ink.

Kingprint

[www.kingprint.com.au](http://www.kingprint.com.au)